

Remove the screws from behind the blanking plates also the screws symmetrically opposite behind the instrument panel.

The facia can now be lifted away.

Refitting is a reversal of this procedure.

SPORT SALOONS

The auxiliary instrument panel may be removed by withdrawing the ashtray, and removing the screws retaining the panel to the facia and parcel tray rail.

Ease the panel out and disconnect the ammeter and oil gauge.

Refitting is a reversal of this procedure.

Facia filler panel

To remove the filler panel (passenger side of the car), simply prise up the tops of the spire caps at the top forward edge of the panel, and remove the screws thus exposed. On some early models, pegs into rubber-lined sockets are used for the retention of the filler panel. The panel is free to be removed after taking out the ashtray. Some cars may be fitted with screws along the lower forward edge of the filler panel.

Before refitting the facia filler panel, it is recommended that the new facia finisher (described under instrument binnacle) is fitted. The finishing strip (3 of Fig. 13) will have to be discarded.

To refit

Refitting of both the instrument binnacle and the facia filler panel is a reversal of the removal instructions, except that the new spire caps (Part No. 7200461) should be used for the top retaining screws of the facia filler panel where these are used.

FACIA RATTLES

Facia stiffener

If, when the instrument binnacle is grasped between the hands and an attempt is made to rock it in a vertical plane, there is any tendency of movement, the facia stiffener (Part No. 7200721) must be fitted. The fitting of this stiffener is quite simple, but care should be taken that the electrical harness is not damaged when drilling the front hole (some bodies already have a cage-nut

fitted) for the retaining screw on the underside of the facia rail. The rear hole for the stiffener is existing in the rear outer edge of the instrument binnacle.

Ignition/starter switch

If it is suspected that rattles are evident between the switch body and the lock barrel, it is recommended that either, one or two washers (depending on type), are fitted against the bottom shoulder of the lock barrel.

Two types of washer are available under Part No's. 7102487 sponge rubber, and 7102434 plastic.

A further point which will assist in the elimination of rattles from this source is the addition of MS.4 silicone based grease to the lock barrel. This grease will also lubricate the wards of the lock.

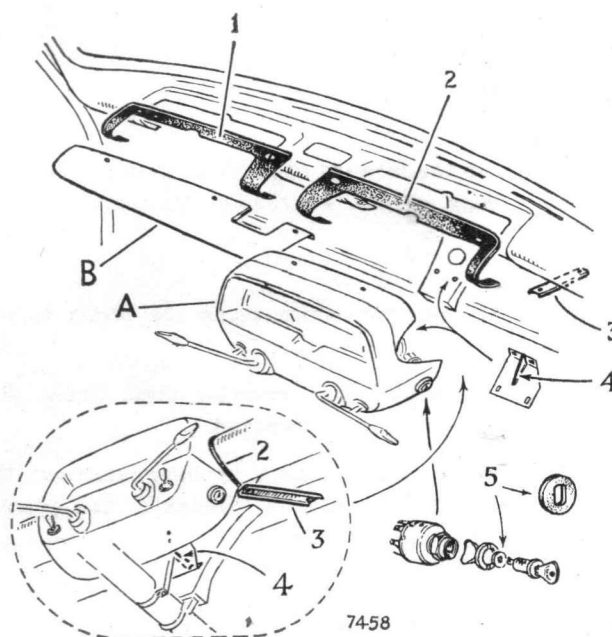


Fig. 17. Facia rattles rectification

1. FACIA FINISHER, L/H
2. FACIA FINISHER, R/H
3. FACIA STIFFENER
4. SUPPORT STAY
5. IGNITION/STARTER SWITCH WASHER
- A. INSTRUMENT BINNACLE
- B. FACIA FILLER PANEL